

1	
2	
3	
4	
5	
6	
7	
8	
9	
10	
11	
12	
13	
14	
15	
16	
17	
18	
19	

VERSIONS

- Type **H**: vertically adjustable
- Type **B**: horizontally adjustable
- Type **HB**: vertical and/or horizontal adjustable
- Type **D**: with through-holes
- Type **DH**: with through-holes, vertical adjustable
- Type **DB**: with through-holes, horizontal adjustable

AISI CF-8 stainless steel **NI**
 - matte shot-blasted **GS**

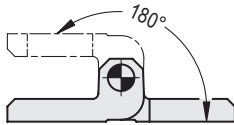
Pin
 AISI 316Ti stainless Steel

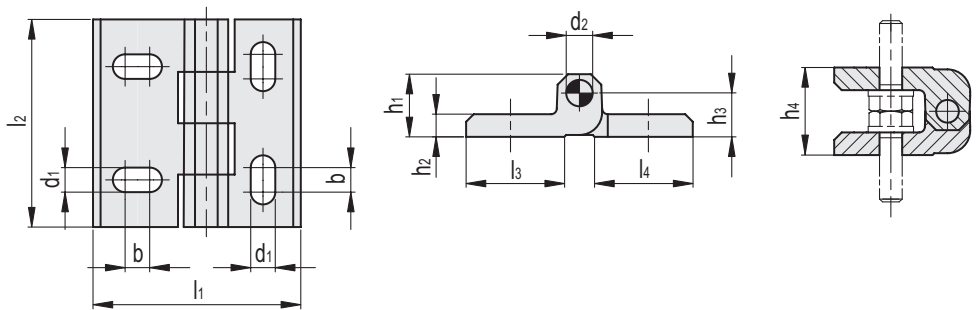
INFORMATION

Hinges GN 235-NI are adjustable in height or width along the slots, depending on the design, and are fastened with hex-head, oval-head or cylinder screws with a low head.
 Thanks to sufficient space (installation space) available for screw heads and washers, the hinges can be opened by 180° without collision.
 The hinge drill pattern corresponds with that of the CMM-SST (see page) hinge family, which allows the hinges to be exchangeable.

ACCESSORIES

- Spacer plates for hinges PCM-SP (see page).
- Spacer for hinge fixing PCM-TH (see page).

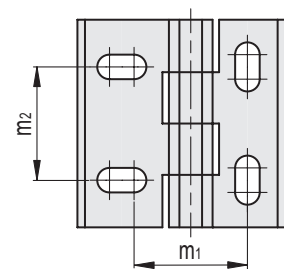
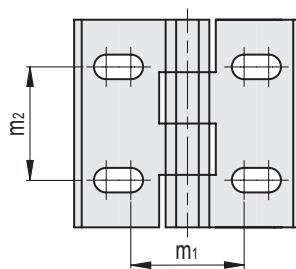
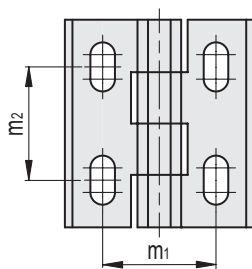




GN 235-NI-H

GN 235-NI-B

GN 235-NI-HB



Conversion Table 1 mm = 0.039 inch	
↓	
mm	inch
40	1.56
45	1.76
50	1.95
55	2.15
60	2.34
68	2.65
76	2.96

GN 235-NI-H

INOX STAINLESS STEEL METRIC

Code	Description	l1	l2	d1	d2	b	h1	h2	h3	h4	l3	l4	m1	m2	△
GN.74305	GN 235-NI-40-45-H-GS	40	45	5.3	4	5.3	13	5	9.5	19	16	16	25	25	80
GN.74317	GN 235-NI-50-55-H-GS	50	55	6.5	6	6.5	16.6	6	11.6	23.2	21	21	30	30	149
GN.74329	GN 235-NI-60-65-H-GS	60	65	8.3	8	8.3	21.4	8	14.9	29.8	26	26	36	36	271

GN 235-NI-B

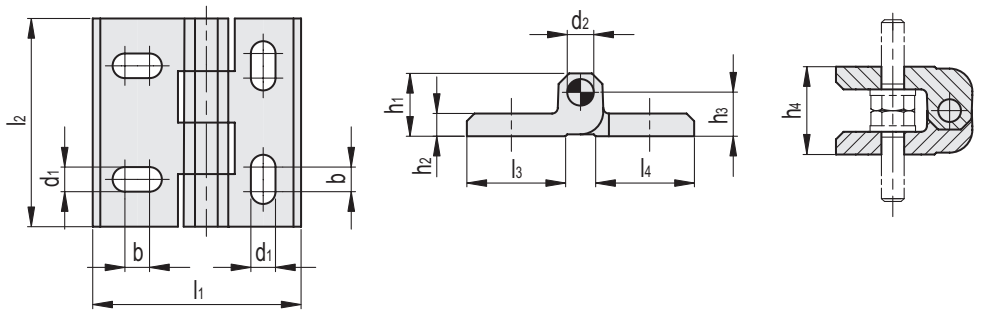
Code	Description	l1	l2	d1	d2	b	h1	h2	h3	h4	l3	l4	m1	m2	△
GN.74311	GN 235-NI-50-45-B-GS	50	45	5.3	4	5.3	13	5	9.5	19	21	21	25	25	93
GN.74323	GN 235-NI-60-55-B-GS	60	55	6.5	6	6.5	16.6	6	11.6	23.2	26	26	30	30	170
GN.74335	GN 235-NI-76-65-B-GS	76	65	8.3	8	8.3	21.4	8	14.9	29.8	33.5	33.5	36	36	329

GN 235-NI-HB

Code	Description	l1	l2	d1	d2	b	h1	h2	h3	h4	l3	l4	m1	m2	△
GN.74309	GN 235-NI-45-45-HB-GS	45	45	5.3	4	5.3	13	5	9.5	19	21	16	25	25	87
GN.74321	GN 235-NI-55-55-HB-GS	55	55	6.5	6	6.5	16.6	6	11.6	23.2	26	21	30	30	161
GN.74333	GN 235-NI-68-65-HB-GS	68	65	8.3	8	8.3	21.4	8	14.9	29.8	33.5	26	36	36	300



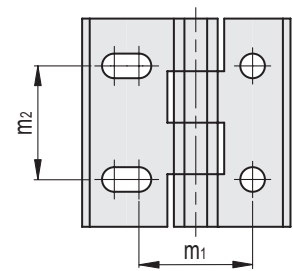
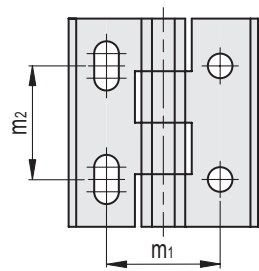
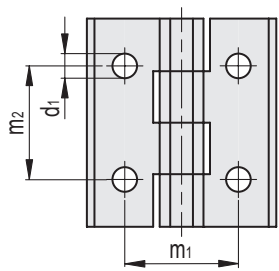
- 1
- 2
- 3
- 4
- 5
- 6
- 7
- 8
- 9
- 10
- 11
- 12
- 13
- 14
- 15
- 16
- 17
- 18
- 19



GN 235-NI-D

GN 235-NI-DH

GN 235-NI-DB



Conversion Table 1 mm = 0,039 inch	
l1	
mm	inch
40	1.56
45	1.76
50	1.95
55	2.15
60	2.34
68	2.65
76	2.96

INOX STAINLESS STEEL **METRIC**

GN 235-NI-D

Code	Description	l1	l2	d1	d2	b	h1	h2	h3	h4	l3	l4	m1	m2	△
GN.74301	GN 235-NI-40-45-D-GS	40	45	5.3	4	5.3	13	5	9.5	19	16	16	25	25	83
GN.74313	GN 235-NI-50-55-D-GS	50	55	6.5	6	6.5	16.6	6	11.6	23.2	21	21	30	30	157
GN.74325	GN 235-NI-60-65-D-GS	60	65	8.3	8	8.3	21.4	8	14.9	29.8	26	26	36	36	290

GN 235-NI-DH

Code	Description	l1	l2	d1	d2	b	h1	h2	h3	h4	l3	l4	m1	m2	△
GN.74303	GN 235-NI-40-45-DH-GS	40	45	5.3	4	5.3	13	5	9.5	19	16	16	25	25	82
GN.74315	GN 235-NI-50-55-DH-GS	50	55	6.5	6	6.5	16.6	6	11.6	23.2	21	21	30	30	154
GN.74327	GN 235-NI-60-65-DH-GS	60	65	8.3	8	8.3	21.4	8	14.9	29.8	26	26	36	36	283

GN 235-NI-DB

Code	Description	l1	l2	d1	d2	b	h1	h2	h3	h4	l3	l4	m1	m2	△
GN.74307	GN 235-NI-45-45-DB-GS	45	45	5.3	4	5.3	13	5	9.5	19	21	16	25	25	88
GN.74319	GN 235-NI-55-55-DB-GS	55	55	6.5	6	6.5	16.6	6	11.6	23.2	26	21	30	30	164
GN.74331	GN 235-NI-68-65-DB-GS	68	65	8.3	8	8.3	21.4	8	14.9	29.8	33.5	26	36	36	310

Hinges and accessories